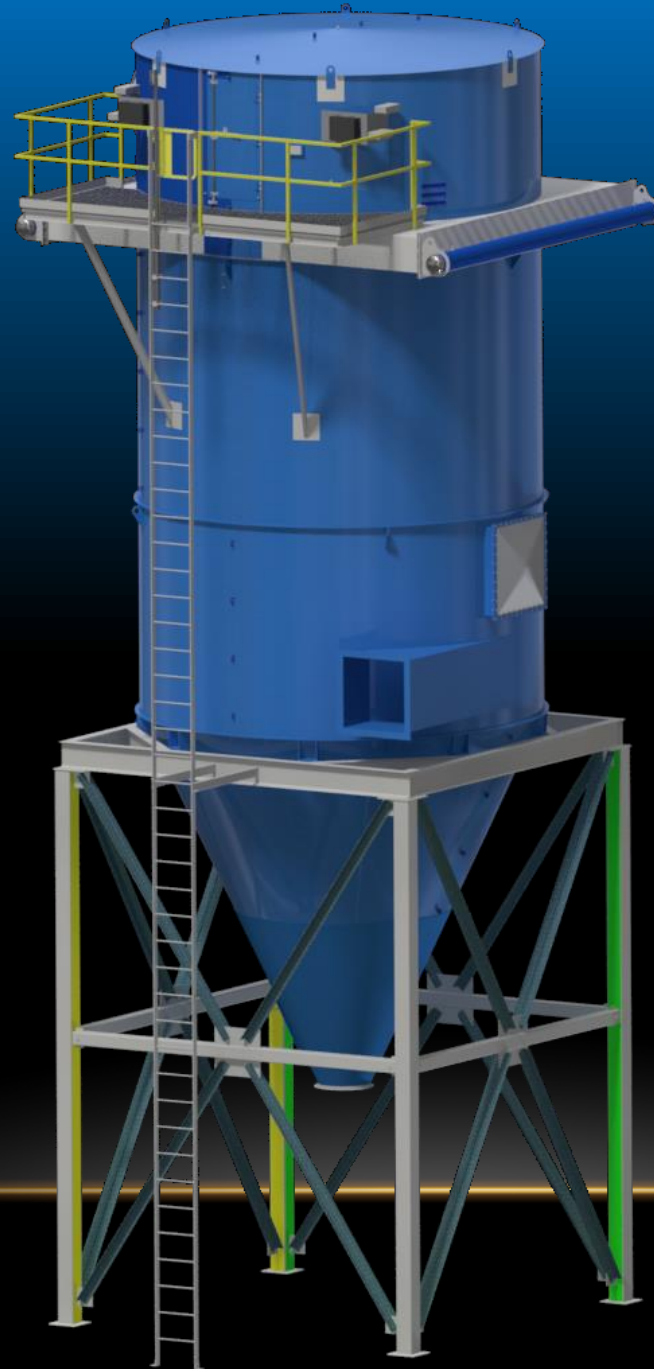


# PULSE ROUND FILTER

Available from  
30 to 588 filter  
bags or filter  
elements in a  
single filter



Mild Steel &  
Stainless-Steel  
Models

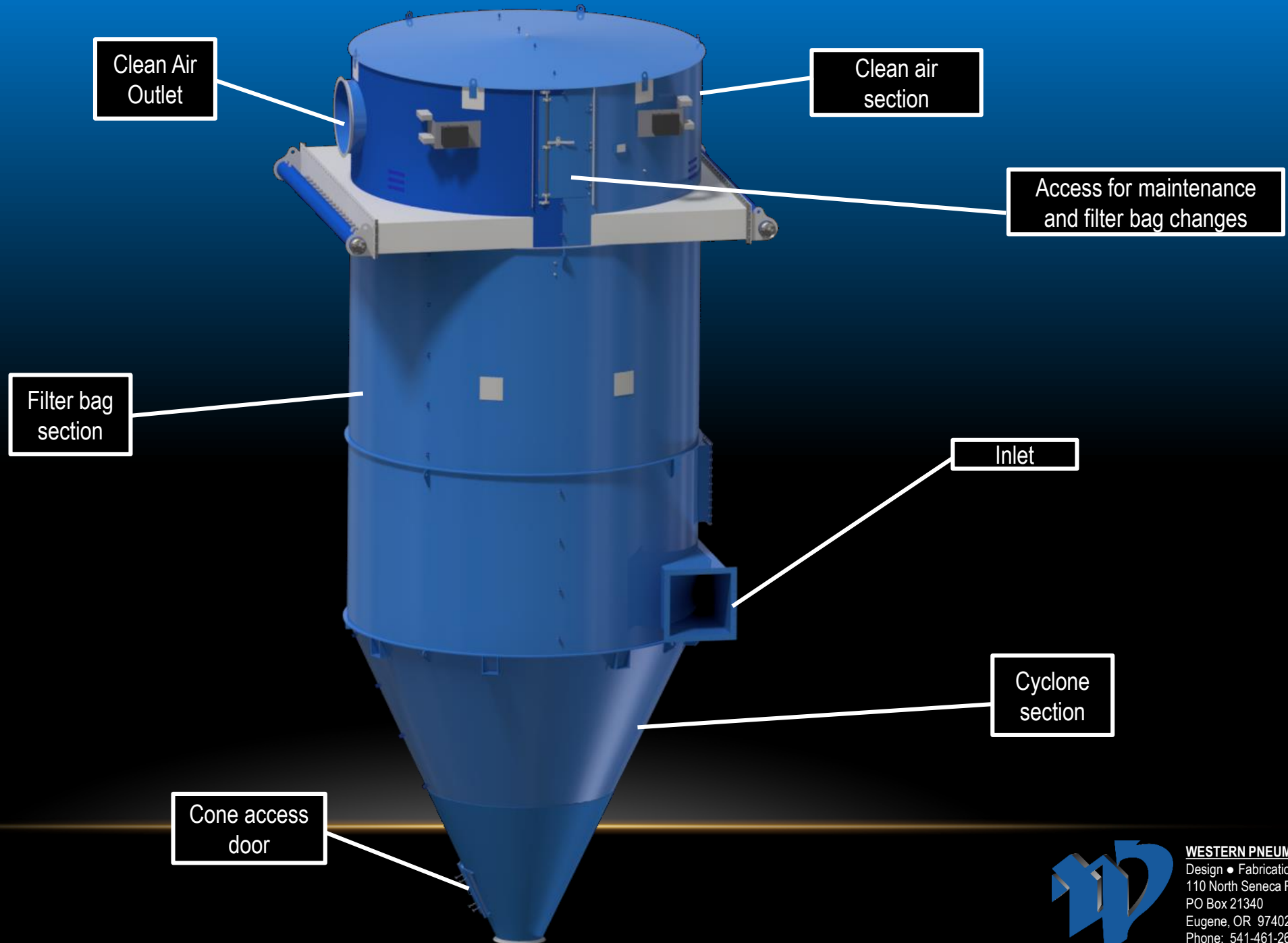
Available with  
Bag or Cartridge  
filters

Configurable  
access and  
support structure



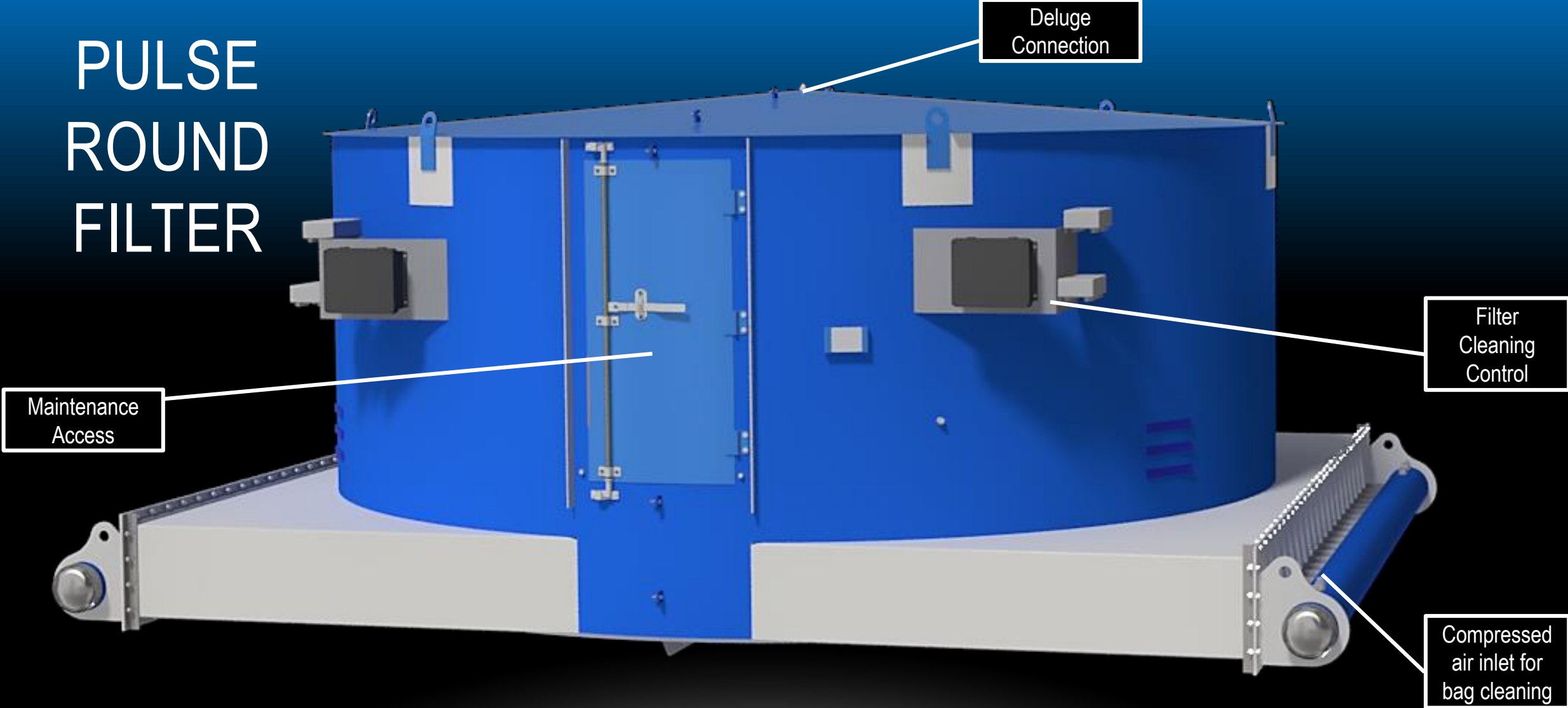
**WESTERN PNEUMATICS, INC.**  
Design • Fabrication • Installation  
110 North Seneca Road  
PO Box 21340  
Eugene, OR 97402  
Phone: 541-461-2600

# PULSE ROUND FILTER



**WESTERN PNEUMATICS, INC.**  
Design • Fabrication • Installation  
110 North Seneca Road  
PO Box 21340  
Eugene, OR 97402  
Phone: 541-461-2600

# PULSE ROUND FILTER



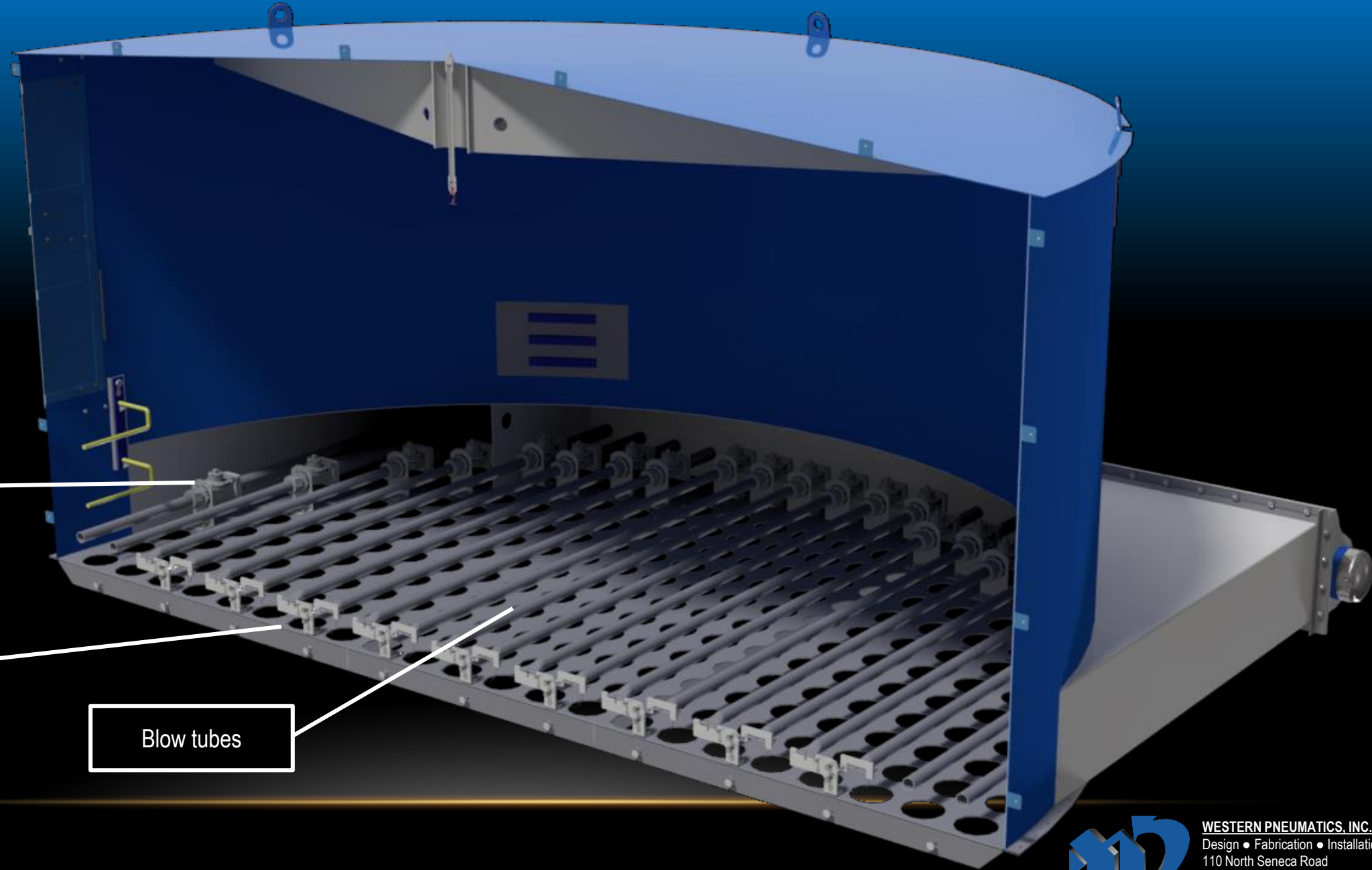
**WESTERN PNEUMATICS, INC.**  
Design • Fabrication • Installation  
110 North Seneca Road  
PO Box 21340  
Eugene, OR 97402  
Phone: 541-461-2600

# PULSE ROUND FILTER

Diaphragm valve

Filter bag supporting  
cell plate

Blow tubes

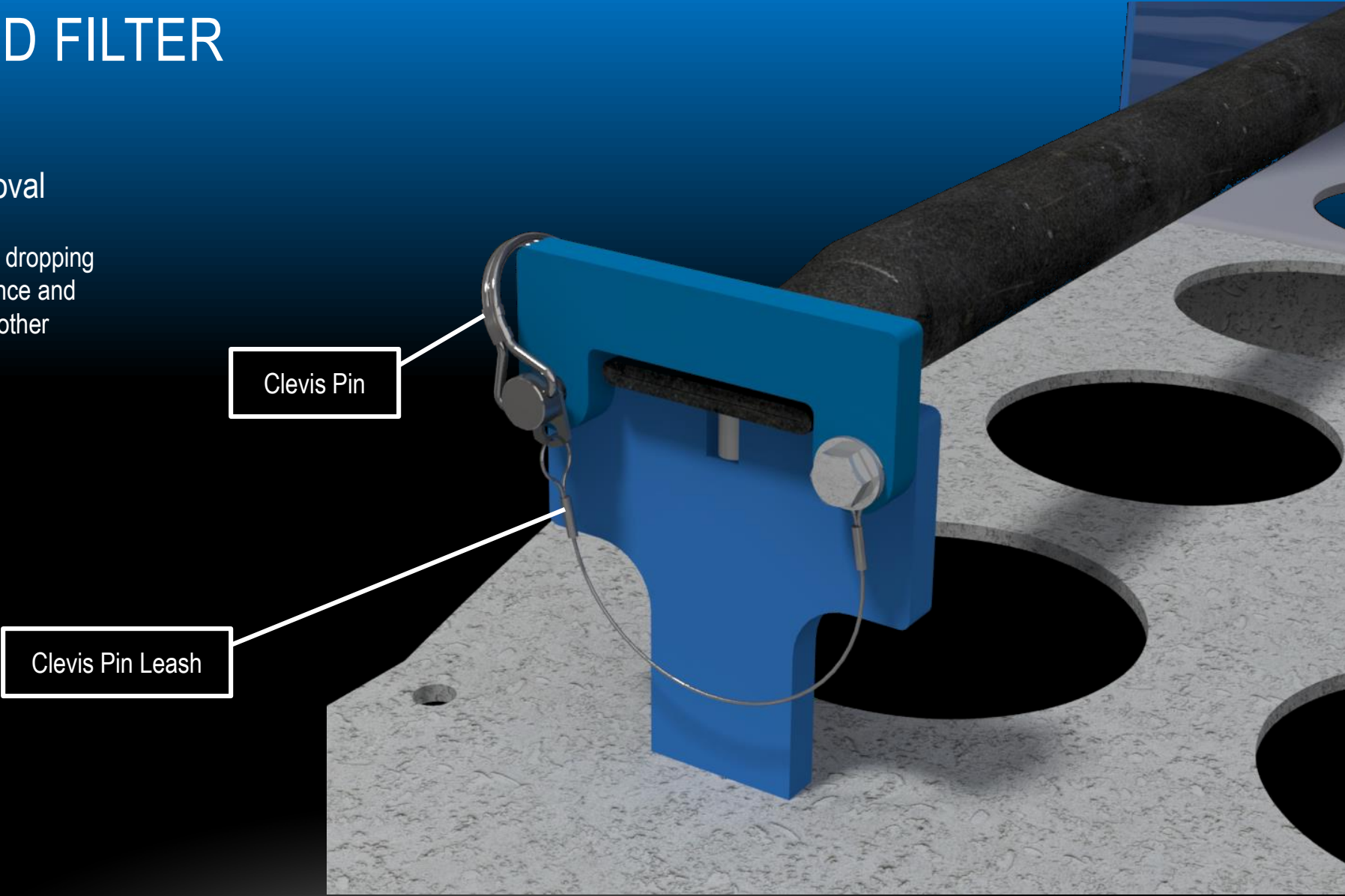


**WESTERN PNEUMATICS, INC.**  
Design • Fabrication • Installation  
110 North Seneca Road  
PO Box 21340  
Eugene, OR 97402  
Phone: 541-461-2600

# PULSE ROUND FILTER

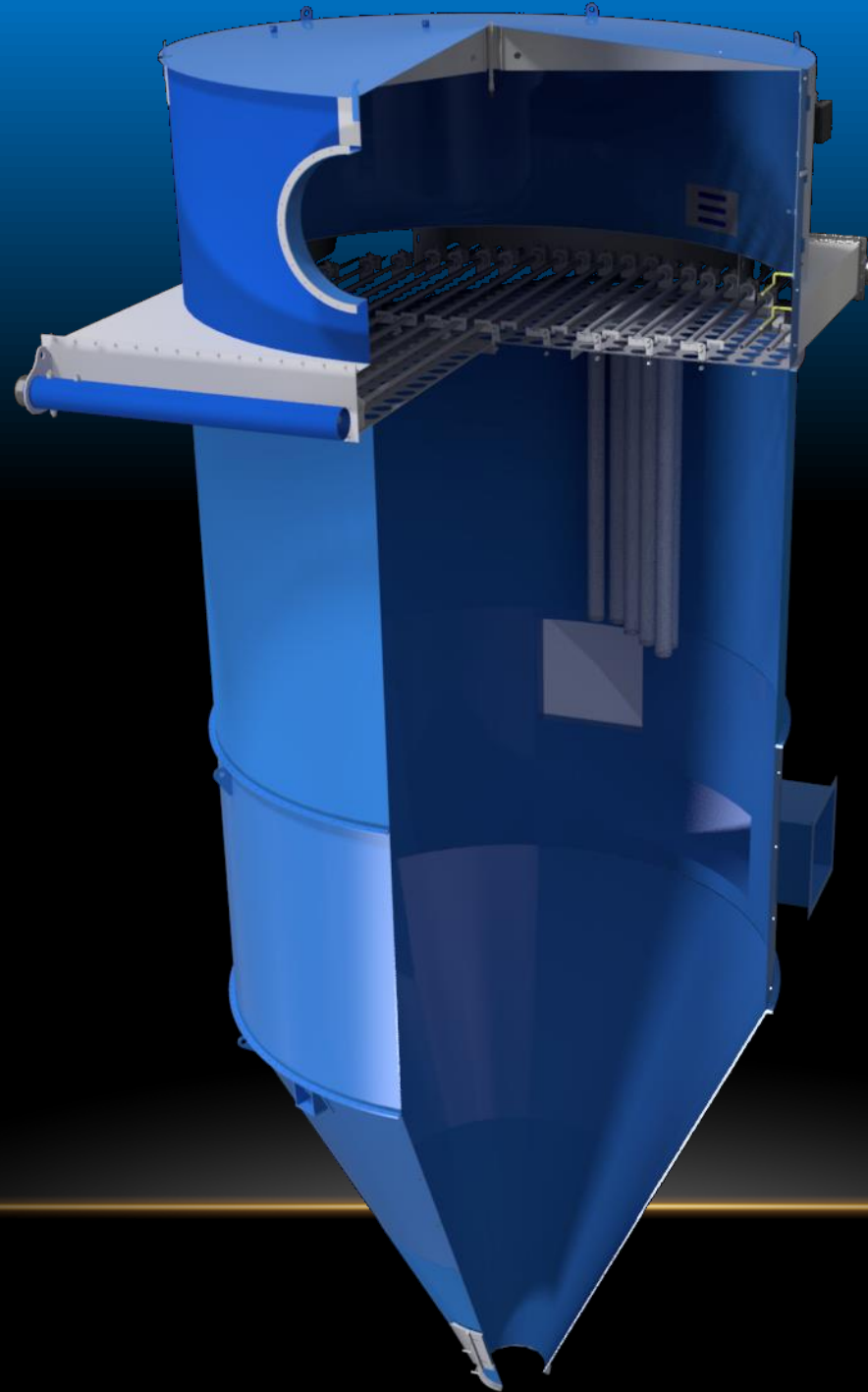
## Toolless Blow Tube Removal

Helps prevent tool and fasteners dropping into the system during maintenance and causing damage to feeders and other equipment.



**WESTERN PNEUMATICS, INC.**  
Design • Fabrication • Installation  
110 North Seneca Road  
PO Box 21340  
Eugene, OR 97402  
Phone: 541-461-2600

# Pulse Round Filter



**WESTERN PNEUMATICS, INC.**  
Design • Fabrication • Installation  
110 North Seneca Road  
PO Box 21340  
Eugene, OR 97402  
Phone: 541-461-2600

# PR FILTER WITH BAG FILTERS

## - STANDARD SIZES -

Number of Bags	Number of Bags	Length of Bags	Diameter of Filter	Cloth Area	Flow rate for 6 to 1 Air to Cloth ratio	Upper Can Area	Interstitial Area
		[ft]	[ft-in]	[square ft]	[CFM]	[square ft]	[square ft]
30	30	8	4-10	377	2,262	18.3	12.5
	30	10	4-10	471	2,827		
	30	12	4-10	565	3,393		
58	58	8	6-7	729	4,373	34.0	22.7
	58	10	6-7	911	5,466		
	58	12	6-7	1,093	6,560		
76	76	8	7-9	955	5,730	47.2	32.3
	76	10	7-9	1,194	7,163		
	76	12	7-9	1,433	8,595		
106	106	8	8-11	1,332	7,992	62.4	41.6
	106	10	8-11	1,665	9,990		
	106	12	8-11	1,998	11,988		
164	164	8	10-4	2,061	12,365	83.9	51.7
	164	10	10-4	2,576	15,457		
	164	12	10-4	3,091	18,548		
196	196	8	11-5	2,463	14,778	102.4	63.9
	196	10	11-5	3,079	18,473		
	196	12	11-5	3,695	22,167		

Number of Bags	Number of Bags	Length of Bags	Diameter of Filter	Cloth Area	Flow rate for 6 to 1 Air to Cloth ratio	Upper Can Area	Interstitial Area
		[ft]	[ft-in]	[square ft]	[CFM]	[square ft]	[square ft]
232	232	8	12-6	2,915	17,492	122.7	77.2
	232	10	12-6	3,644	21,865		
	232	12	12-6	4,373	26,239		
316	316	8	13-10	3,971	23,826	150.3	88.2
	316	10	13-10	4,964	29,782		
	316	12	13-10	5,956	35,739		
376	376	8	15-1	4,725	28,350	178.7	104.9
	376	10	15-1	5,906	35,437		
	376	12	15-1	7,087	42,525		
440	440	8	16-4	5,529	33,175	209.5	123.1
	440	10	16-4	6,912	41,469		
	440	12	16-4	8,294	49,763		
508	508	8	17-7	6,384	38,302	242.8	143.1
	508	10	17-7	7,980	47,878		
	508	12	17-7	9,576	57,453		
588	588	8	18-10	7,389	44,334	278.6	163.1
	588	10	18-10	9,236	55,418		
	588	12	18-10	11,084	66,501		



# PR FILTER WITH FILTER ELEMENTS

## - STANDARD SIZES -

Nominal Filter Size	Total Number of Filter Elements	Diameter of Filter	Total Cloth Area	Flow rate for 4 to 1 Air to Cloth ratio	Upper Can Area	Upper Can Velocity @ 4 to 1 Air to Cloth Ratio	Nominal Interstitial Velocity	Interstitial Velocity @ bottom of long Elements	Interstitial Velocity @ bottom of Short Elements
		[ft-in]	[square ft]	[CFM]	[square ft]	[FPM]	[FPM]	[FPM]	[FPM]
30	30	4-10	986	3,942	18	215	301	251	201
58	58	6-7	1,905	7,621	34	224	319	263	213
76	76	7-9	2,497	9,986	47	212	295	247	197
106	106	8-11	3,482	13,928	62	223	318	262	212
164	164	10-4	5,387	21,550	84	257	391	310	261
196	196	11-5	6,439	25,754	102	252	379	302	252
232	232	12-6	7,621	30,485	123	248	372	298	248
316	238	13-10	7,818	31,273	150	208	288	242	192
376	282	15-1	9,264	37,055	179	207	287	241	191
440	330	16-4	10,841	43,362	210	207	286	240	191
508	406	17-7	13,337	53,348	243	220	311	257	207
588	470	18-10	15,440	61,758	279	222	315	260	210





# ABOUT WPI

- Western Pneumatics was founded in 1982 with our focus on high and low pressure pneumatic conveying and aspiration systems.
- Diversification has been a constant as we offer materials handling systems for wood products, environmental, biomass, agricultural and minerals.
- The headquarters in Eugene, Oregon, include the fabrication facilities with CNC machine centers, laser cutting machine, sandblasting and painting .
- An additional fabrication facility is located in Ruston, Louisiana.
- WPI typically offers turnkey systems including design, fabrication and installation.

## **WPI Corporate Headquarters**

110 N Seneca Road  
PO Box 21340  
Eugene, Oregon 97402

T. 541.461.2600  
F. 541.461.2606

## **WPI-South**

2601 McDonald Ave  
Ruston, LA 71270

T. 318.232.1307  
F. 318.232.7720



**WESTERN PNEUMATICS, INC.**  
Design • Fabrication • Installation  
110 North Seneca Road  
PO Box 21340  
Eugene, OR 97402  
Phone: 541-461-2600